



OUR OFFER

Dedicated Servers

www.dataspace.pl





GENERAL INFORMATION

Data center

Data Space is a modern, **TIER 3** class facility located at the outskirts of Toruń, in a carefully selected site ensuring excellent accessibility to the power and fiber infrastructure. Two independent power mains, from two separate suppliers. Remote TPIX exchange point. Possibility to configure transmissions to the majority of communication exchange points in Poland.

- ✓ 3 geographically independent telecommunication fiber optic connections
- ✓ 4 exchange points accessible on site
- ✓ 2 T1 operators
- ✓ Network edge extensible up to 0.5 Tbit/s

We have been trusted by:

 **morele.net**

Media 4U

 **Copernicus**

 **BSB**
up to excellence

VULCAN
RAZEM DLA LEPSZEJ OŚWIATY

 **MegiTeam**

Our servers

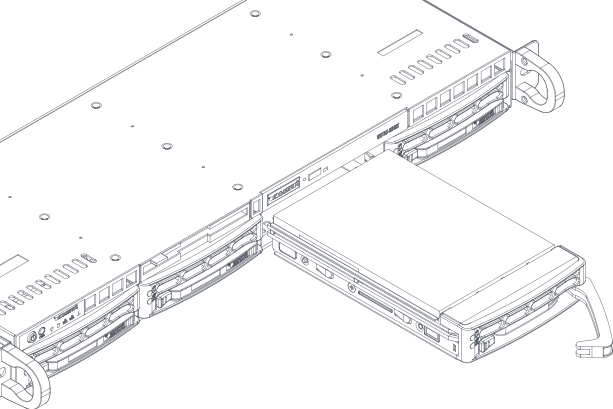
We offer popular configurations of dedicated servers online, on 24/7/365 basis.

We also build non-standard server configurations and complete environments, custom-tailored to the needs of our Clients. The delivery time usually does not exceed 2 weeks.

Each server can be re-configured on Client's request, even after startup.

We will also assist you in designing and implementing your project in the shortest time possible and within optimum budget. Our priority is to ensure stable operation of Client systems and to support them in achieving the expected business objectives.





Product line for Clients looking for a simple, stand-alone machine with guaranteed and physically separated resources. The components have been selected to minimize potential failures while maintaining the price at a very attractive level.

Server price includes:

- ✓ Management card
- ✓ Hot-swappable drives
- ✓ Price guaranteed throughout the term of the contract
- ✓ Quick launch of the service

www.dataspace.pl

READY MADE SOLUTIONS

Startup

FROM **289** PLN/MTH

PROCESSOR

✓ Xeon E3-1240v6

RAM

✓ 32 GB

⊖ 64 GB*

LOCAL STORAGE

✓ 2x 2 TB SATA

⊖ 2x 240 GB SSD*

⊖ 2x 4 TB SATA*

⊖ 2x 480 GB SSD*

RAID CONTROLLER

✓ Brak

⊖ LSI-9271-4i + BBU*

PORT

✓ 100 Mbit/s

⊖ 1 Gbit/s*

TRANSFER

✓ 10 TB

⊖ 15 TB*

⊖ 20 TB*

⊖ 50 TB*

LAN

✓ No

⊖ 1 Gbit/s*

⊖ 25 Gbit/s*

* - optional (increases the price of the server).

READY MADE SOLUTIONS

Backup

FROM **399** PLN/MTH

PROCESSOR

✓ Intel Core i3 ✓ E3-1240v4*

RAM

✓ 8 GB ✓ 16 GB* ✓ 32 GB*

LOCAL STORAGE

✓ 4x 4 TB SATA

RAID CONTROLLER

✓ Brak ✓ LSI-9271-4i + BBU*

PORT

✓ 100 Mbit/s ✓ 1 Gbit/s*

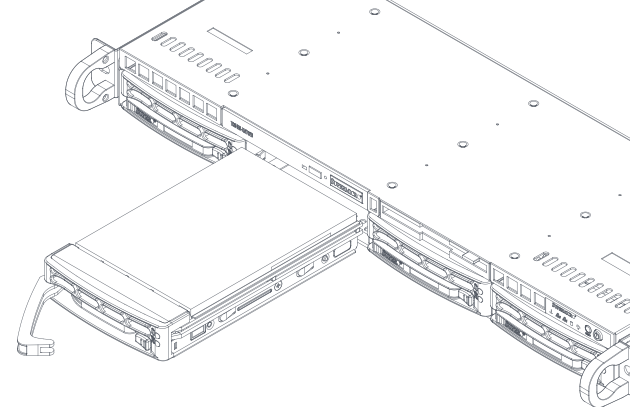
TRANSFER

✓ 10 TB ✓ 15 TB* ✓ 20 TB* ✓ 50 TB*

LAN

✓ No ✓ 1 Gbit/s* ✓ 25 Gbit/s*

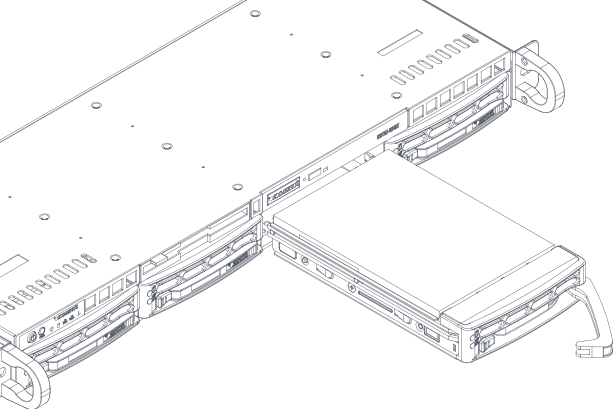
* - optional (increases the price of the server).



Simple and performance-tested solutions for data storage, backups, etc. In our opinion, it is the most cost-efficient solution offering an excellent compromise between data security, storage capacity and price.

Server price includes:

- ✓ Management card
- ✓ Hot-swappable drives
- ✓ Price guaranteed throughout the term of the contract
- ✓ Quick launch of the service



Simple and flexible configuration with a broad range of functionalities: www server, processing node, router, gaming server, RDP server and many others. It's very high adaptation flexibility makes it the ideal machine to start with.

Server price includes:

- ✓ Management card
- ✓ Hot-swappable drives
- ✓ Price guaranteed throughout the term of the contract
- ✓ Quick launch of the service

www.dataspace.pl

READY MADE SOLUTIONS

1 processor

FROM **579** PLN/MTH

PROCESSOR

- ✓ Xeon 1650v4
- ✓ Xeon E5-2650v4*

RAM

- ✓ 64 GB
- ✓ 128 GB*

LOCAL STORAGE

- ✓ 2x 4 TB SATA
- ✓ 2x 480 GB SSD*

RAID CONTROLLER

- ✓ Brak
- ✓ LSI-9271-4i + BBU*

PORT

- ✓ 100 Mbit/s
- ✓ 1 Gbit/s*

TRANSFER

- ✓ 10 TB
- ✓ 15 TB*
- ✓ 20 TB*
- ✓ 50 TB*

LAN

- ✓ No
- ✓ 1 Gbit/s*
- ✓ 25 Gbit/s*

* - optional (increases the price of the server).

READY MADE SOLUTIONS

2 processors

FROM **829** PLN/MTH

PROCESSOR

✓ 2x Xeon 2620v4 ✓ 2x Xeon E5-2650v4*

RAM

✓ 64 GB ✓ 128 GB*

LOCAL STORAGE

✓ 2x 480 GB SSD + 2x 4 TB SATA

RAID CONTROLLER

✓ Brak ✓ LSI-9271-4i + BBU*

PORT

✓ 100 Mbit/s ✓ 1 Gbit/s*

TRANSFER

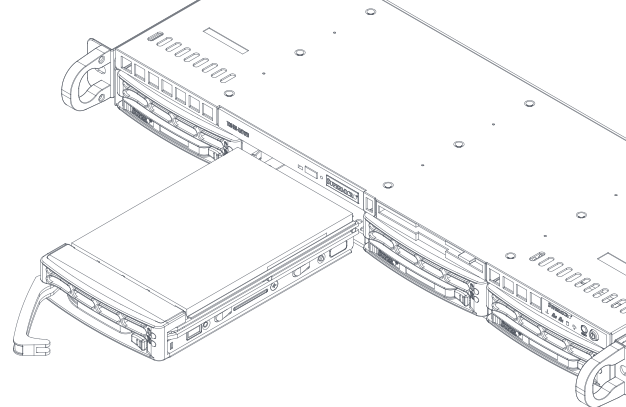
✓ 10 TB ✓ 15 TB* ✓ 20 TB* ✓ 50 TB*

LAN

✓ No ✓ 1 Gbit/s* ✓ 25 Gbit/s*

* - optional (increases the price of the server).

www.dataspace.pl

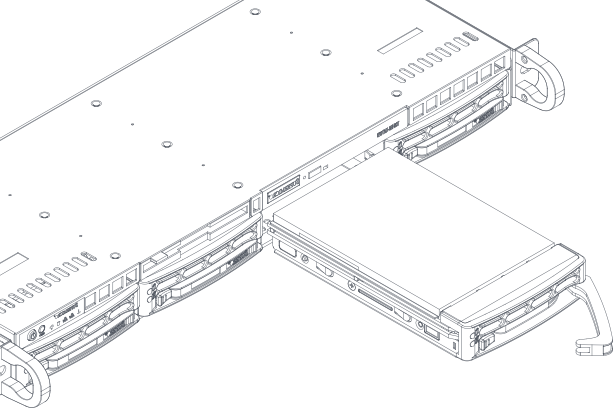


Most frequently chosen by our clients. Optimum combination of computing power, price and subsequent extension possibilities.

Server price includes:

- ✓ Management card
- ✓ Hot-swappable drives
- ✓ Price guaranteed throughout the term of the contract
- ✓ Quick launch of the service

 **DATASPACE**



Most frequently chosen by our clients. Optimum combination of computing power, price and subsequent extension possibilities.

Server price includes:

- ✓ Management card
- ✓ Hot-swappable drives
- ✓ Price guaranteed throughout the term of the contract
- ✓ Quick launch of the service

www.dataspace.pl

READY MADE SOLUTIONS

Power

FROM **1489** PLN/MTH

PROCESSOR

✓ 2x Xeon 2650v4

RAM

✓ 128 GB

LOCAL STORAGE

✓ 4x 1 TB SSD

RAID CONTROLLER

✓ LSI 9271-4i

PORT

✓ 100 Mbit/s

⊖ 1 Gbit/s*

TRANSFER

✓ 10 TB

⊖ 15 TB*

⊖ 20 TB*

⊖ 50 TB*

LAN

✓ No

⊖ 1 Gbit/s*

⊖ 25 Gbit/s*

* - optional (increases the price of the server).

Custom configuration

Apart from ready-made packages, we offer custom configurations with parts selected based on Client's individual needs. We also help choose network devices and drive arrays.

- ✓ 15 powerful servers
- ✓ Redundant 25 Gbit/s network
- ✓ Redundant arrays with a large number of SSD disks - Internet access with adequate IP addresses

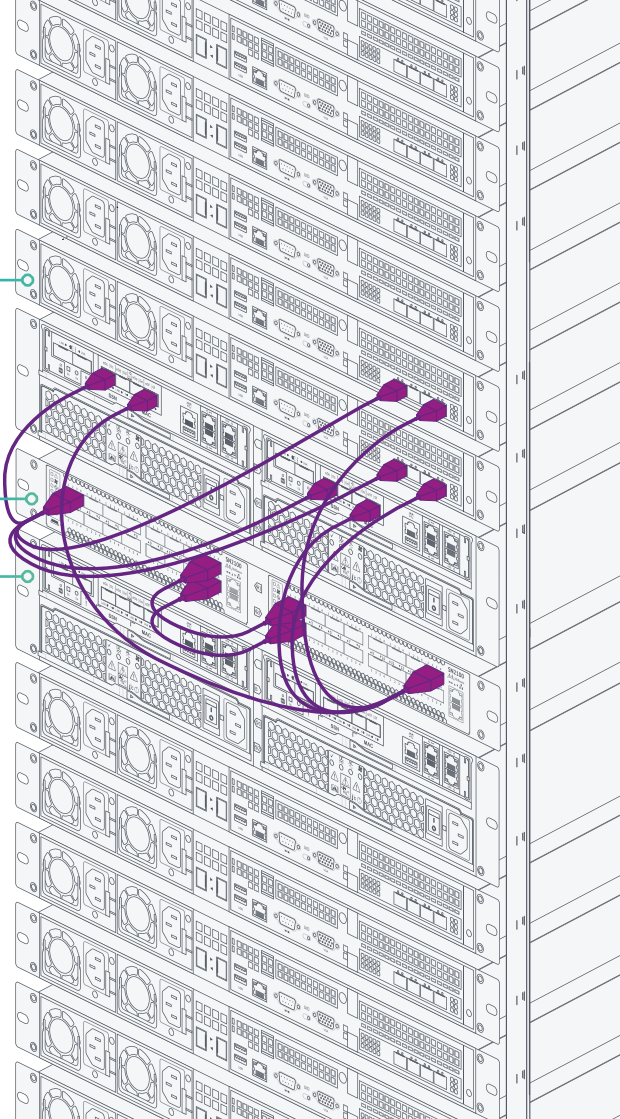
15 x Server:

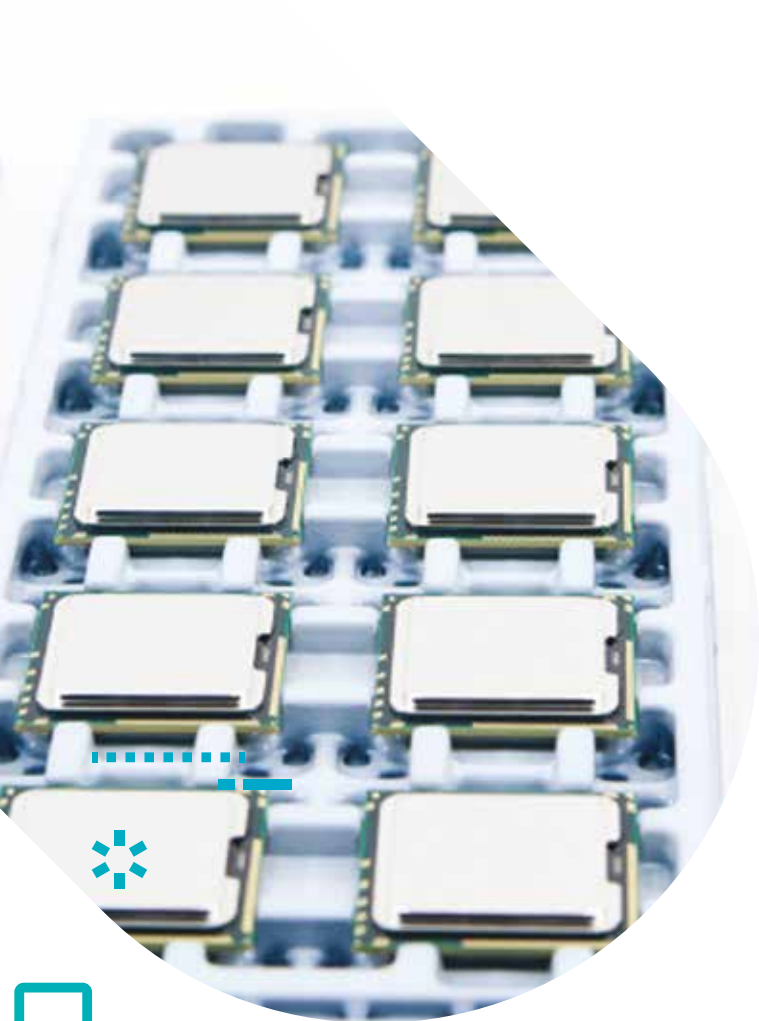
2x 2650v4 12 Core 2,2 GHz
128 GB RAM
2x 25 Gbit/s Ethernet

2 x Switch 48x 25 Gbit/s

2 x Disc array:

4 TB SSD
20 TB SATA 8x 10 Gbit/s





WHAT MAKES US DIFFERENT?

Components

All our servers and hardware systems are built using Enterprise class components, certified for Data Center continuous operation. The SSD and mechanical disk drives used in our systems come from manufacturers offering less than 0.45% AFR (Annual Failure Rate) – lowest in the class.

Our in-house spare parts store allows us to replace a damaged component within 2 hours from notification of the failure. Before application in working environment, every new component is tested by our engineers for compatibility with other elements of the system, compliance with performance parameters declared by the manufacturer and compatibility with various operating systems.

We follow a few simple rules when choosing components:

- ✓ Only Enterprise class server components
- ✓ Selected for lowest failure rates
- ✓ Best Price/Performance ratio



GURANTEE OF RELIABILITY

SLA

Thanks to our 24/7/356 support services, we guarantee the repair of damaged hardware in the highest market standard of 2h service. Even in complex situations where malfunctioning of the hardware is the problem, we do not dwell on time-consuming diagnostics but instead, we automatically replace the component with operational parts.

Infrastructure SLA:

Our data server was designed and built to meet the very strict TIER 3 standards. Redundancy of fiber lines and network hardware and complete transparency.

You can feel safe with us.



Electrical power

99,999%

2 supply lines, 2N+1 generator system, redundant UPS.



Internet

99,95%

Redundant routers and core hardware.



Cooling

99,955%

2 independent refrigerant circuit installations, redundant chillers.



Hardware SLA:



Gold

2h



Premium

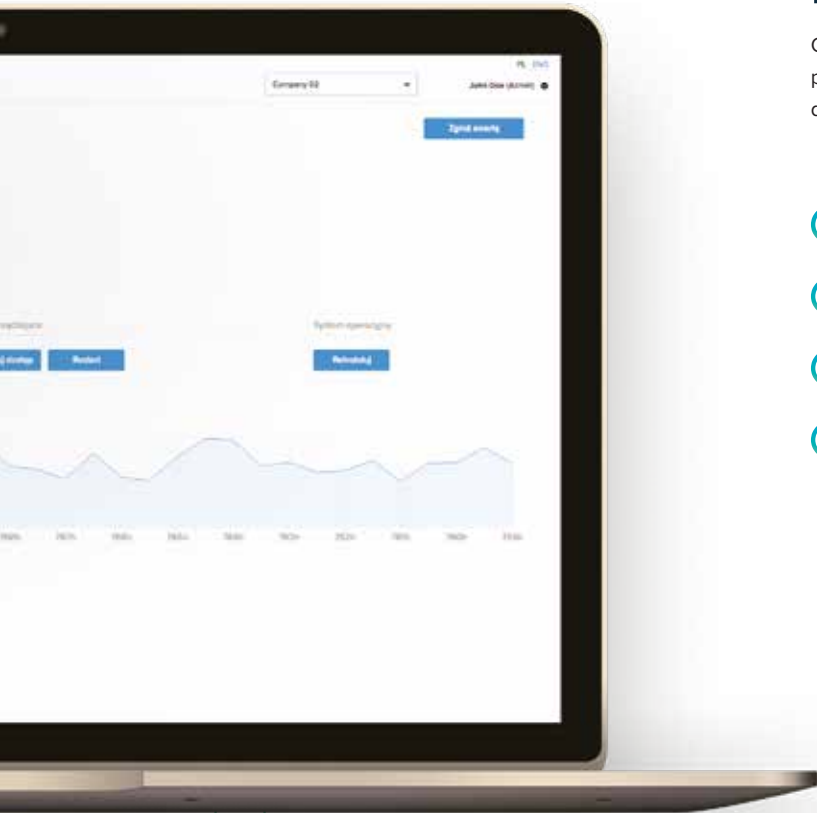
4h



Standard

12h

- ✓ Full range of server management functionalities
- ✓ Remote console and installation
- ✓ Address management
- ✓ Network management
- ✓ Reporting
- ✓ Failure notification



OUR SUPPORT

24/7/365 support

Our local team of engineers is at your disposal through the customer panel, by e-mail and by phone - 24 hours a day, 7 days a week, 365 days a year.

- ✓ True 24/7/365 support availability
- ✓ Contact with our IT experts
- ✓ Dedicated account managers
- ✓ Fast troubleshooting



OUR SUPPORT

24/7/365 monitoring

A state-of-the-art data center does not exist without a 24/7/365 monitoring system. Both our employees and technical services of our Clients have access to real-time information about the functional status of all components of their infrastructure. Failures are reported on real-time basis via the preferred communication channel (SMS, e-mail, Panel) to all persons indicated in the escalation procedures.

Our internal monitoring system is currently watching more than 1,000 devices. Huge arrays, servers, virtual servers, internet links, maintenance systems – cooling, power supply, fire-extinguishing, ventilation and physical access control.

Additionally, we monitor 100% of our network traffic for stability, quality and security. In 2016, our firewall system has detected in excess of 700,000 incidents.

Competitional advantage

- ✓ Most flexible offer in Poland
- ✓ No installation fees
- ✓ No hidden costs
- ✓ Flexible contract terms
- ✓ Partnership-based approach to long-term cooperation
- ✓ Transparent terms of cooperation
- ✓ Only new hardware (oldest servers - Q3 2016)
- ✓ State-of-the-art technologies
- ✓ Continuous improvement
- ✓ Consulting and infrastructure design included in the price

The price of every server includes:

- ✓ 100 Mbit/s port with 10 TB transfer
- ✓ SLA - 12h Standard
- ✓ Access to the management card
- ✓ Control panel
- ✓ IPv4 address
- ✓ IPv6 network
- ✓ Assistance, consulting and monitoring
- ✓ 24/7/365 technical support (e-mail and telephone)



Contact us!

Questions? We are at your disposal.



+48 56 657 71 79



sales@dataspace.pl



www.dataspace.pl



/DataSpacePL



/DataSpacePL



/DataSpacePL

